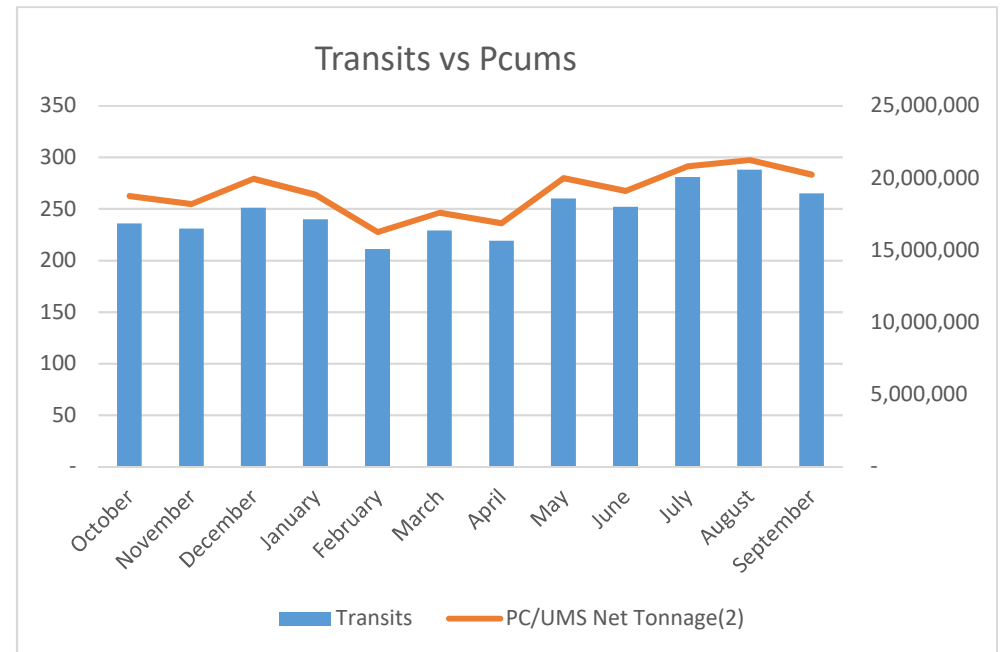
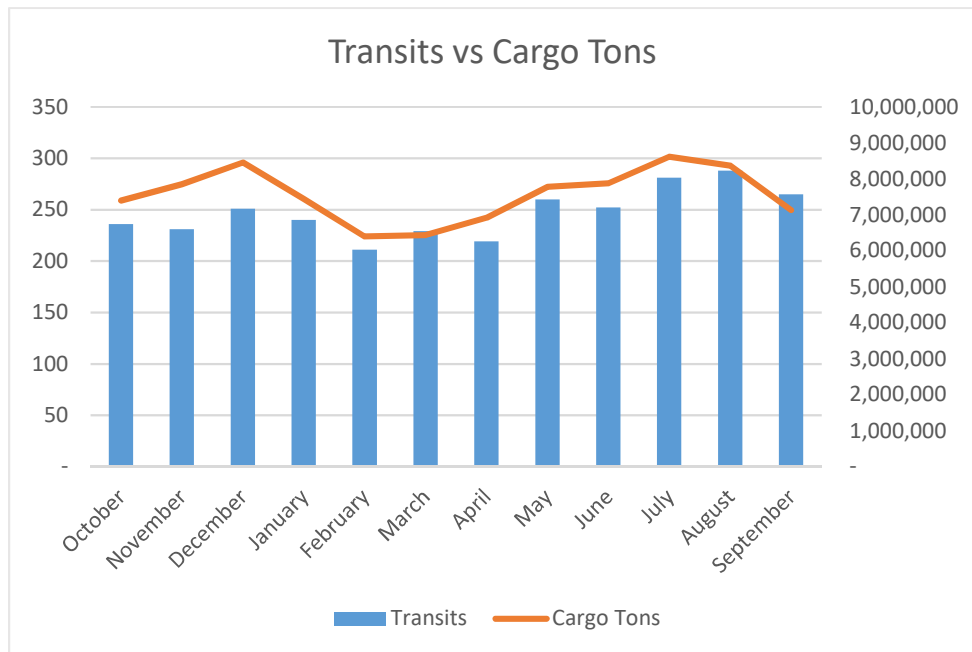


Neopanamax Traffic Through the Panama Canal by Month
Fiscal Year 2019

Month	Transits	Cargo Tons	PC/UMS Net Tonnage ⁽²⁾
October	236	7,394,900	18,761,933
November	231	7,853,543	18,202,425
December	251	8,454,382	19,952,270
January	240	7,446,076	18,834,583
February	211	6,401,006	16,260,531
March	229	6,440,845	17,607,176
April	219	6,914,661	16,880,247
May	260	7,778,896	19,988,324
June	252	7,879,327	19,100,266
July	281	8,615,995	20,805,629
August	288	8,368,355	21,245,991
September	265	7,127,310	20,235,760
Total	2,963	90,675,295	227,875,135
Monthly Average	247	7,556,275	18,989,595



⁽¹⁾ Only includes large commercial, those paying tolls greater than the minimum tariffs implemented on June 1, 1998. (Small commercial traffic not included)

The Neopanamax Lock was inaugurated on June 26, 2016

⁽²⁾ The tonnage measurement system for the Panama Canal tolls assessment, the Panama Canal/Universal Measurement System (PC/UMS). This amount also includes the PC/UMS tonnage for full containership and passenger vessels.